

# Fabric Selection

Pierre Frey



Louison - Crème



Opio - Naturel



Opio - Orzo



Murielle - Naturel



Bridget - Meringue



# Fabric Selection

Pierre Frey



Sable



Crème



Dune



Bambi



Miel



Moutarde



# Fabric Selection

Pierre Frey - Outdoor



Sablot Écru



Levant



Sablot Mastic



Koala Naturel





# Fabric Selection

Yarn Collective – Ismay Bouclé



Jasmine - 01



Parchment - 02



Flax - 04



Clay - 11



Carrara - 03



Pistachio - 05



Moss - 17



Moonrock - 12



Pearl - 06



Mustard - 23



Masala - 19



# Fabric Selection

Dedar – Kakaorum



Ivory - 01



Ecume - 07



Duna - 03



Charcoal - 06



# Fabric Selection

Lelièvre



Lama - Craie - 01



Lama - Naturel - 02



Sherpas - Craie - 05



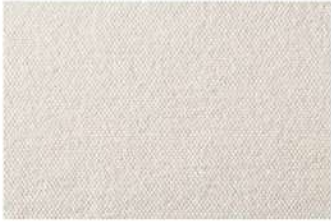
Sherpas - Moutarde - 03





# Fabric Selection

## Rogers & Goffigon



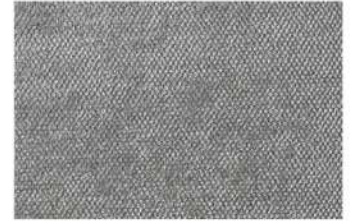
Tourmaline  
Vanilla - 01



Tourmaline  
Brass - 17



Tourmaline  
Terracotta - 17



Tourmaline  
Mockingbird - 03



Tourmaline  
Deep Blue Sea - 11



Cambon  
Lamb - 01



Cambon  
Lino - 02



Cambon  
Wakame - 09



Shearling  
White Water - 01



# Fabric Selection

## Chapas Textiles



Umi



Andes



Ova





# Fabric Selection

Holland & Sherry - Melissani



Natural - 01

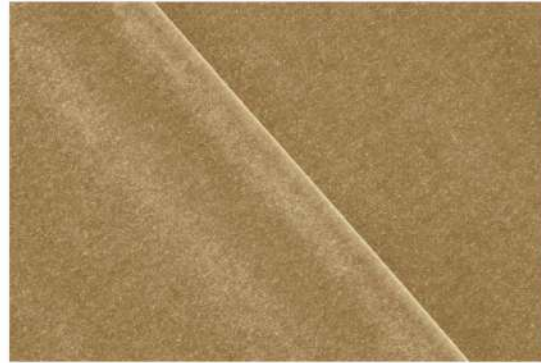


# Fabric Selection

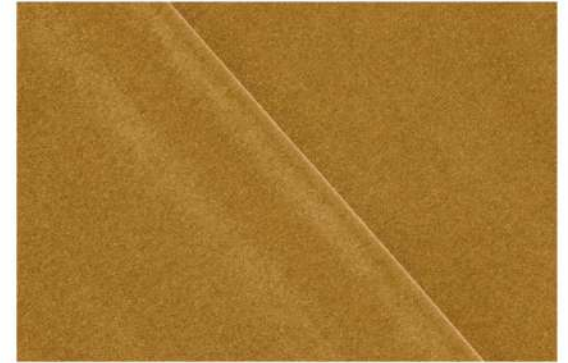
Yarn Collective - Marci



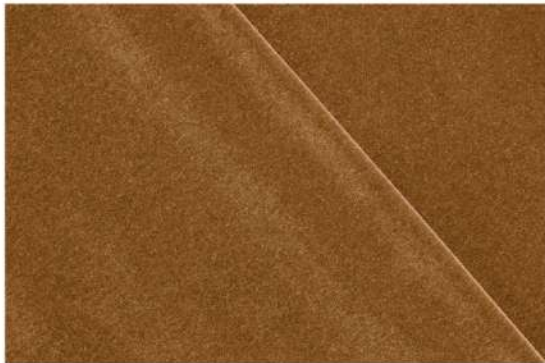
Mustok - 01



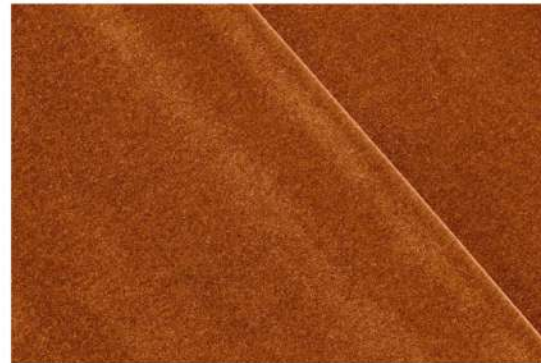
Sarawak - 02



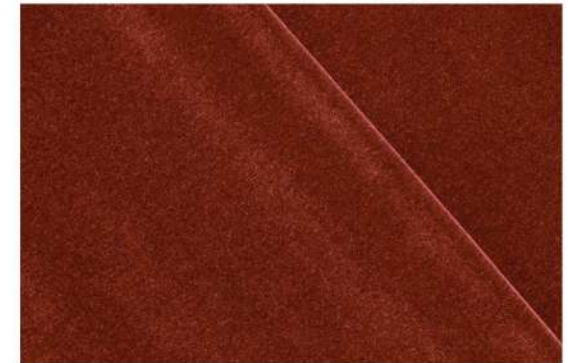
Turmeric - 11



Galangal - 04



Masala - 06



Paprika - 07

